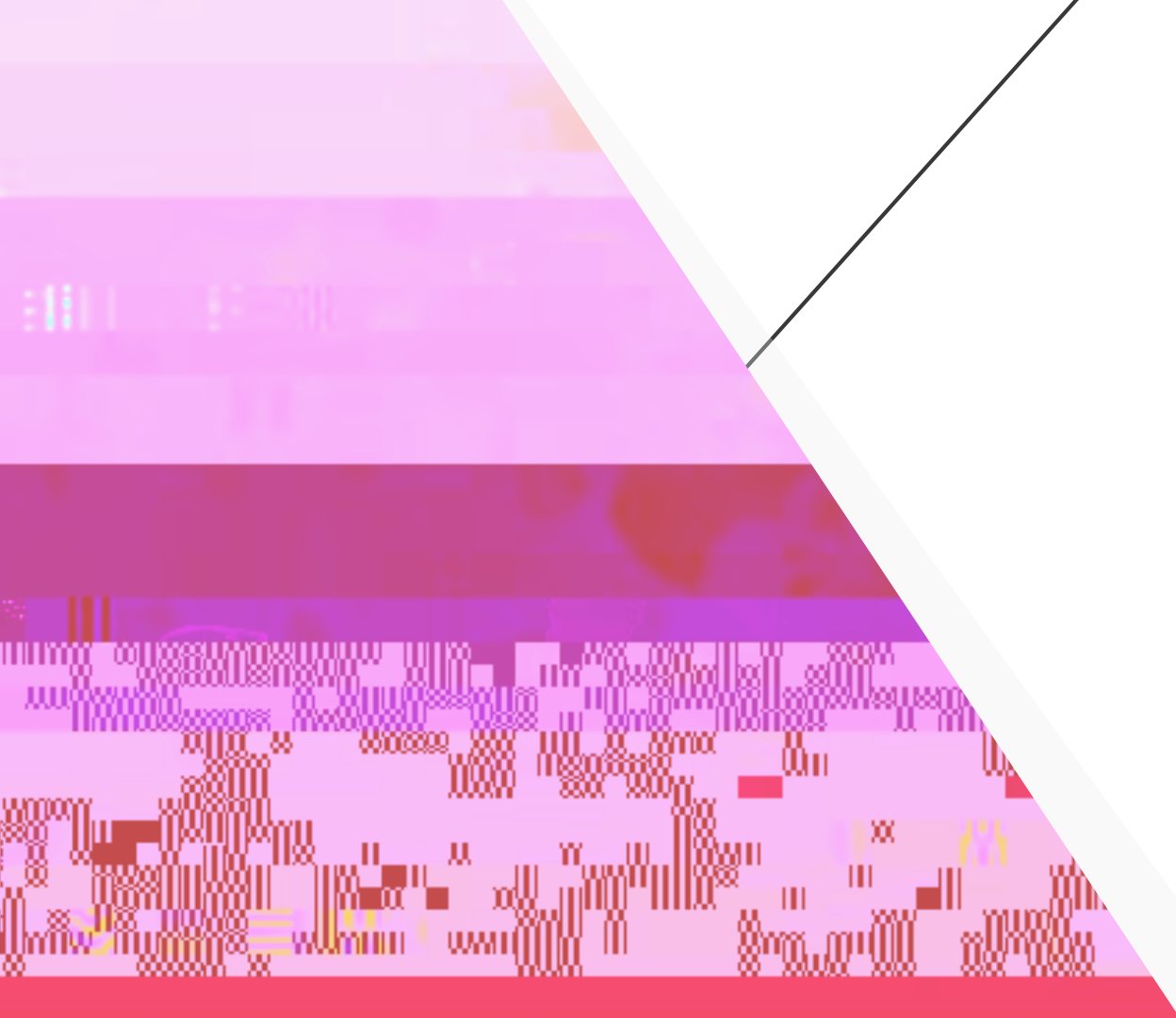


---

Board Innovation Committee  
Informational Meeting






---

Definition, Mission, and  
Vision



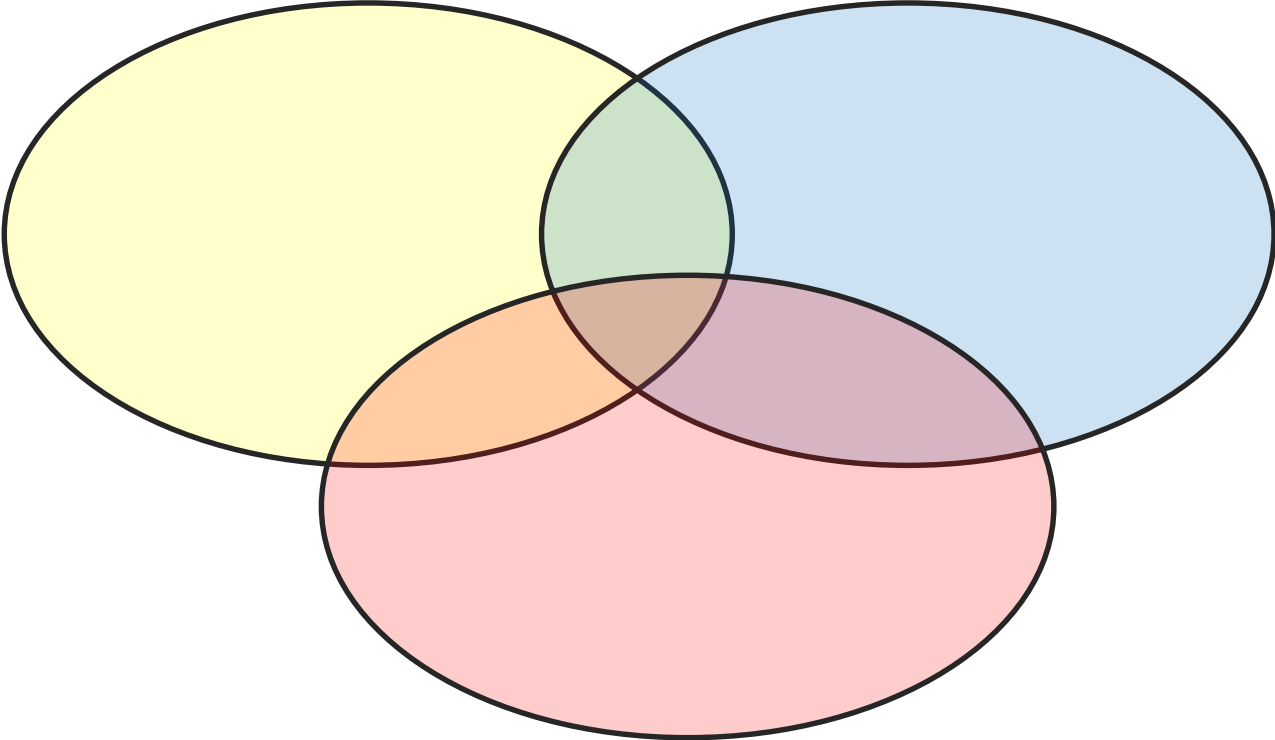
â Ç-TECH 9-14 model addresses  
postsecondary degree completion  
and career readiness by smoothing

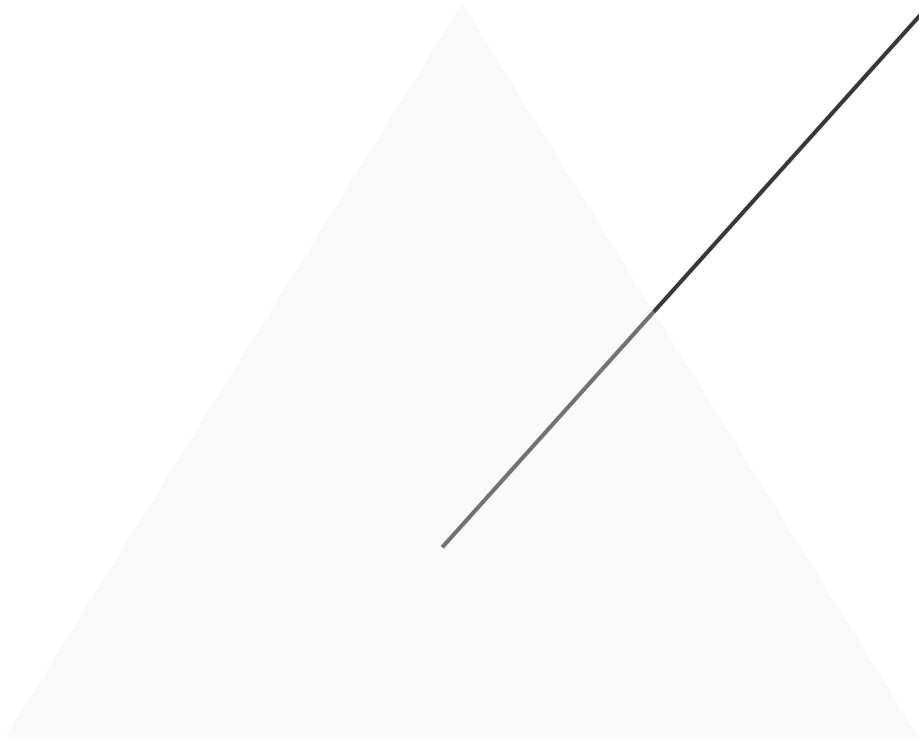



---

In partnership with Alamo Colleges and industry professionals, our school will create industry and college pathways for students focused on in demand careers.

We strive to improve lives through a free, industry and college preparatory program driven by a high-quality education that provides top quality candidates that are ready to contribute to society.







English  
Math  
Science  
Social Studies  
Fine Arts  
Physical Education

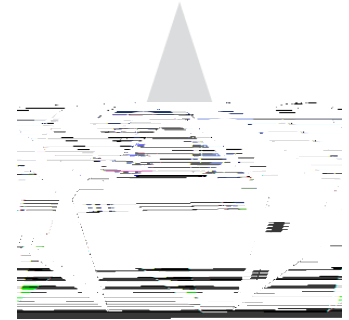
Students choose a pathway & track and move towards certification and earn core college credits for any public university in Texas

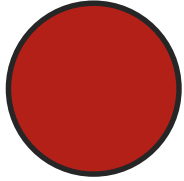


Processes, technologies, and materials for reconstruction and alteration of vehicles

Dental assisting skills and chairside functions, including examinations, instruments, and procedures.

Nursing processes, assessments, interpretations, and theories, including therapeutic and diagnostic services.





ASE Entry Level Certification  
Non-Structural Analysis &  
Damage Repair  
and  
Painting/Refinishing



Patient Care Technician  
Phlebotomy  
EKG Technician

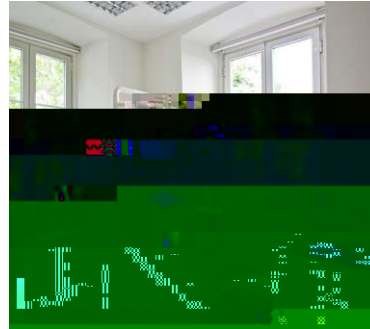


Certified Dental Assistant

Students involved in CTE programs make progress through levels of courses each year. Each

Level 3 and 4 courses are often work-based or job-focused, with real world jobs and/or rotations.

**CAI IDED**







+

1

Ç





---

How do I get in?

Applications are open now!

Applications are available during presentation meetings and due on or before **February 1, 2023**. No late applications will be accepted. All applications must be submitted to the counseling

Only incoming 9<sup>th</sup> grade students who reside in the JISD school district for the 2022-2023 school year are eligible to apply.

**Step 1:** Complete applications will be screened to ensure minimum expectations are met.

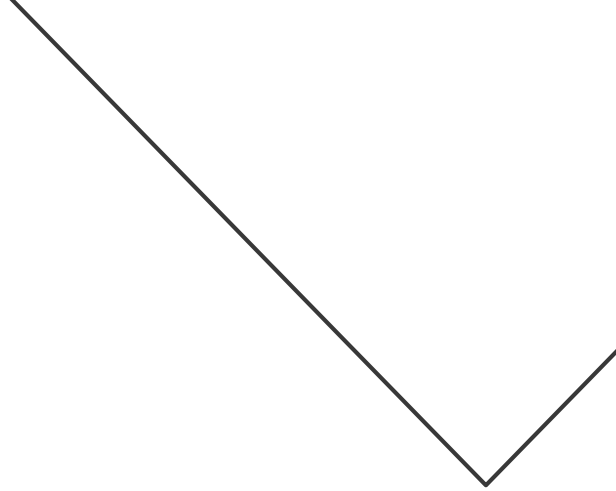
**Step 2:** Selected students are required to attend student/parent meetings to discuss student expectations, responsibilities, and commitments as a P-TECH student.

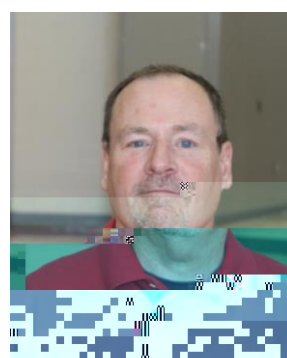
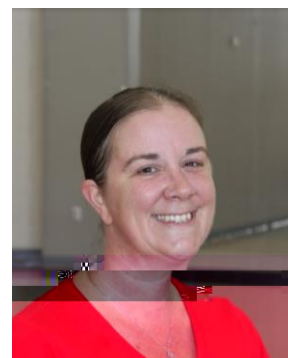
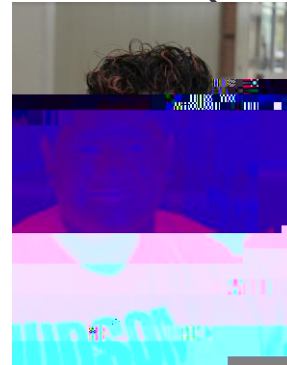
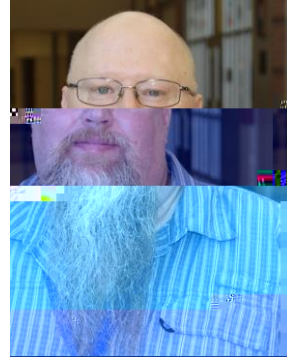
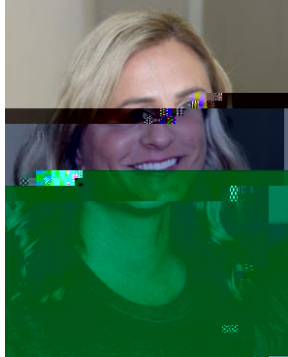
**Step 3:** A public lottery will be conducted and 30 students will be selected for each track offered in the program. JISD has 5 middle schools, therefore 6 students will be accepted to each track from each middle school.

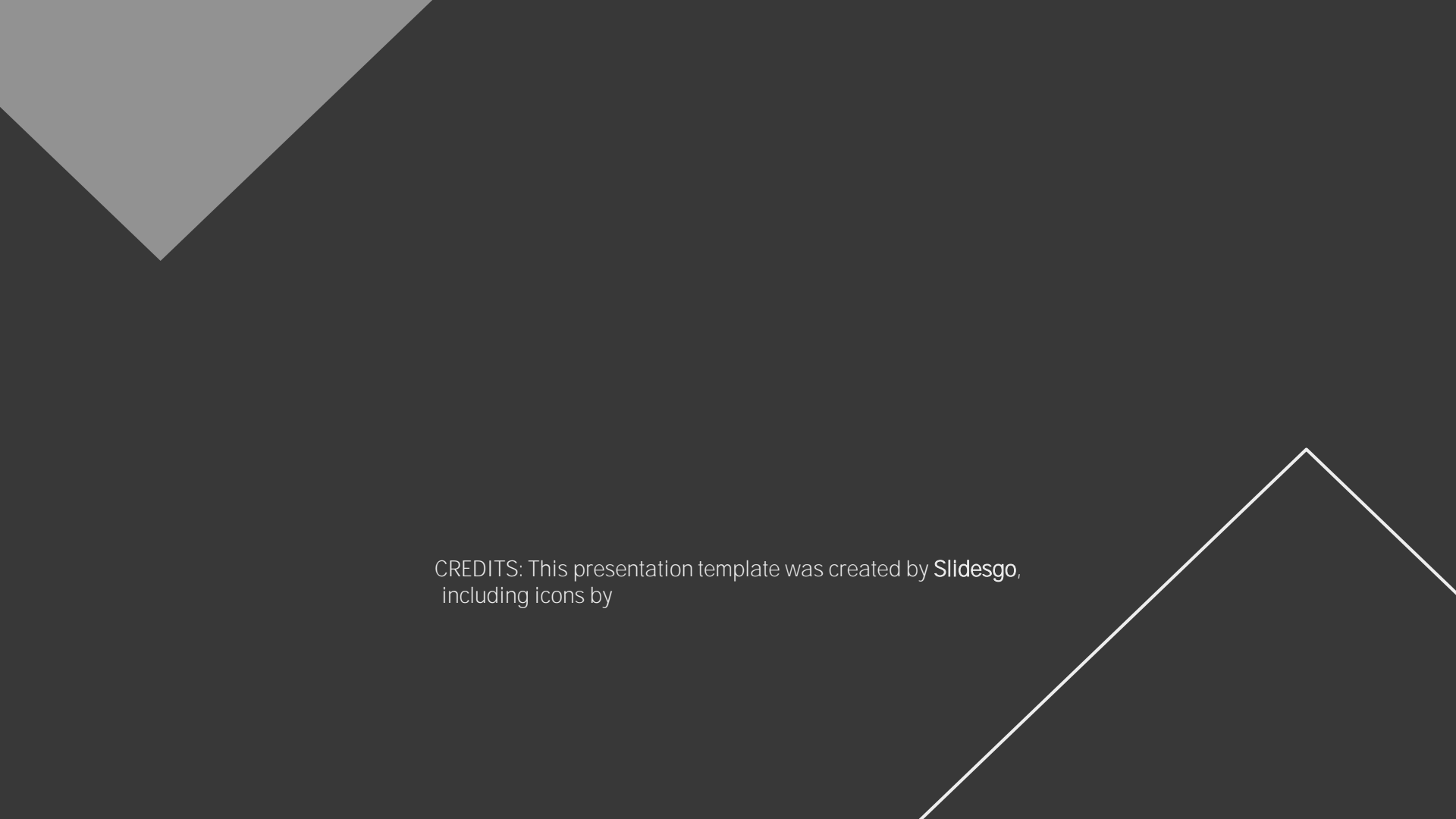




—







CREDITS: This presentation template was created by [Slidesgo](#),  
including icons by